



LISKA

LIGHTING DESIGN



Liska creates atmospheres of natural and artificial lighting design in built environment as schemes for Architecture, using design research based on artistic assets with high tech applications. We are a team of Lighting Designers and Engineers with experience spanning over 30 years. Our experience covers various projects for example cultural, hospitality, retail, office, residential, wellness, hospitals, swimming pools, landscape, infrastructure developments, customized lighting installations and art installations.

Our inspiration is the ever changing environment around us. Nature has a strong impact providing amazing lighting spectacles with the unique Nordic Light in Iceland. Simple occurrences such as the silhouetting of an object, reflection, shadow, mirroring and the amazing colours created in nature are indeed inspiring us and reflected in our mind and projects.

Liska does always take the environmental impact of their activities into consideration, both in practice, in office and fieldwork as well as applying the core idea of sustainable development in each and every design and advisory project, big or small.

Thus promoting the policy of environmental sensitivity to each and every cooperative party. Developing integral lighting solutions through a platform of services that harmoniously integrate electrical lighting, natural lighting and lighting controls is key to creating a balance between functional lighting and creative design.

Liska uses strategies of nordic lighting design and has been developing the concept. Nordic Lighting Design has evolved a certain Ideology different from further South in Europe. Human Centric concept is the main factor in the nordic lighting design. Different factors as respect for heritage, holistic design approach that takes into account ecological factors, sustainability, aesthetics and perception of space. The Nordic Lighting Innovation Network in Denmark, Norway and Iceland have developed a definition of “Nordic Lighting Design” as following:

- An integral part of Scandinavian Design traditions – minimalistic beauty and functionality
- Genuine high quality in terms of materials and perception
- Design and solutions that shape light itself to human needs
- Optimal balance between function, aesthetics and sustainability
- Design that improves life through interaction with architecture and spaces



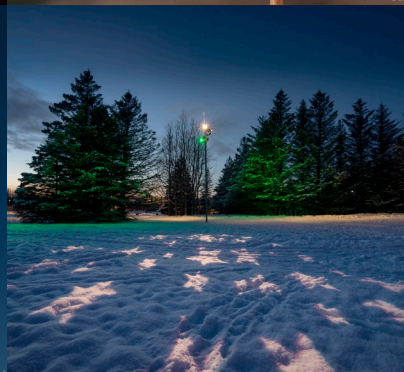
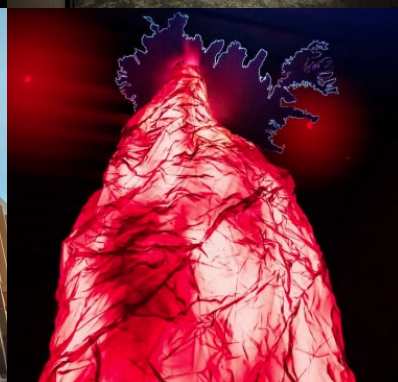
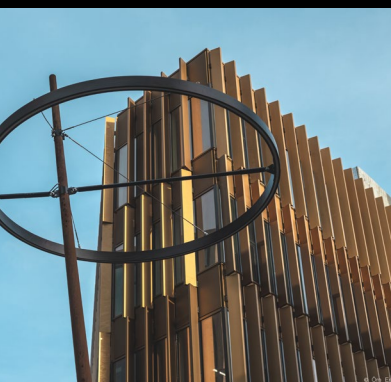
LIGHTING DESIGN



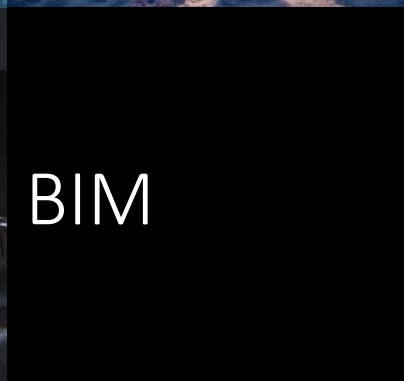
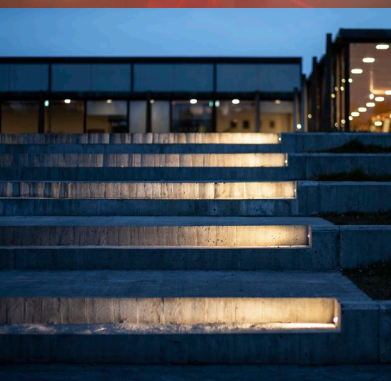
ELECTRICAL DESIGN



DAYLIGHTING



LIGHT ART & MUSEUMS



BIM

LATEST AWARDS & NOMINATIONS

[d]arc Awards 2019

Places- High Budget: Blue Lagoon The Retreat
(Shortlisted)

[d]arc Awards 2019

Art- Low Budget: Organs
(Shortlisted)

BUILD

Best Lighting Design agency 2019 – Iceland
(Winner)

Lux Life

2019 Best Lighting Design firm – Iceland
(Winner)

Lighting Design Awards 2019

Hotel Project of the Year in association with LAMO: The Retreat at Blue Lagoon, Grindavík, Iceland
(Shortlisted)

Lighting Design Awards 2019

Leisure Project of the Year : The Lava Center, Hvalsöllum, Iceland
(Shortlisted)

Illumination Engineering Society of North America (IESNA) 2019

Illumination Award of Merit for its meritorius contribution to Lighting Design: The Retreat at Blue Lagoon,
Grindavík, Iceland
(Winner)

Icelandic lighting design awards 2018

Indoor lighting design 2018 – The Lava Center
(Winner)

Lux Designer awards 2018

Best Lighting Design Firm Iceland
(Winner)

Grapevine Design awards 2018

Project of the year: The Lava Center
(Winner)



FEATURED PROJECTS

Hotels and Well-being

The Retreat at the Blue Lagoon, IS
Blue Lagoon Spa, IS
Fosshotel Reykholt, IS
Fosshotel Mývatn, IS
UMI Hotel, IS
Reykjavik Swimming Hall, IS
Guðlaug Sea Baths, IS

Residential

Bryggjuhverfi Residential Park, IS
Brynjureitur Residential Flats, IS

Public buildings

Hólmsheiði Prison, IS
Snæfellsstofa Visitor Center, IS
Krikjubæjarklaustur Visitor Center, IS
Harpa Conference Hall Outdoor Lighting & Indoor Car park, IS

Educational

Veröld Institute of Foreign Languages, Reykjavik, IS
University of Reykjavik, IS

Healthcare

Árborg Care Home for the Elderly, IS
Askim Hospital, NO
Blue Lagoon Clinic, IS

Municipality

Austurbakki Harbour Front Reykjavik, IS
Norðurbakki Harbour Front Hafnarfjörður, IS
Reykjastræti Shopping Street, IS
Laugavegur Shopping Street, IS
Naustatorg Square Reykjavik, IS
Reykjavik City Lighting Master Plan, IS
Klambratún City Park, IS
Street Lighting for Various Municipalities, IS

Light Art & Museums

Lava Center, IS
Organs - Light Art, IS
Winter Festival Reykjavik, IS
Spectra Light Festival, UK
Faroe Island Saga of Light, FO
Feather- Light Art, IS

Offices

Fiskiðjan, Westman Islands City Office, IS
Hlíðasmári 12 Offices, IS



WHY HIRE A PROFESSIONAL LIGHTING DESIGNER?

HOW A PROFESSIONAL LIGHTING DESIGNER CAN BRING YOUR VISION TO REALITY

Professional lighting designers achieve both cost and code compliance by using experience, talent and expertise to guide each project from early concepts through construction and occupancy, with the strategic benefits of lighting quality at the forefront. Quality lighting design is a process of communicating the value of visual performance, architectural appeal, energy efficiency, environmental sustainability and safety.

A professional lighting designer:

- Meets the needs of the people who use the space
- Selects cost-effective and energy-efficient products most appropriate for the project
- Creates an innovative lighting solution that achieves the perfect balance of function and aesthetics
- Solves the unique lighting challenges of a wide range of interior and exterior environments
- Strengthens and enhances any space through creative, yet functional, lighting plans

When utilizing a professional lighting designer on a project, architects and end-users benefit from the

designer's unique ability to craft spaces, create drama, secure comfort and reveal the shapes and textures of a project.

LIGHTING DESIGNERS CONSIDER LONG-TERM COSTS

The involvement of a professional lighting designer in a project can assure long-term cost-savings in terms of equipment, operations, people and aesthetics.

EQUIPMENT COST CONTROL

A lighting designer may either provide a design to meet an established budget, or may help to establish the budget early in the design phase. The lighting designer will select equipment from numerous manufacturers to help keep bids competitive and/or recommend lighting equipment or techniques to reduce installation costs. Because a lighting designer does not manufacture, sell or install equipment, his or her involvement in the project may serve to encourage competition.

OPERATIONS COST CONTROL

Methods to reduce long-term operations costs may be an important consideration for the owner. A professional lighting designer's life cycle cost analysis will demonstrate the return on initial investment

benefits of certain techniques or technologies. There are numerous ways in which a professional designer can introduce cost reduction methods to benefit the project, for example:

Avoiding over-lighting

In some areas, costs can be reduced simply by not over-lighting a space. Over-lighting is common when visual issues are not understood, or when going by the book in determining candela requirements. Over-lighting also may occur if the recommendations of individuals who sell equipment are relied upon too heavily.

Improving reflectance + integrating daylight

Improving the reflectance value of a surface can help reduce lighting costs, as well as integrating daylight with electric light.

People costs

Quality of light affects people costs, and a lighting designer can help maximize your efficiency. New studies are demonstrating the effects of lighting on retail sales, office productivity, and the ability to attract people to commercial downtown districts after dark. Lighting designers are keenly aware of these issues, as well as the techniques recommended for achieving positive results.

Aesthetical costs

Technical skill can be learned, but talent cannot. The value-added for good creative design is difficult to assess, and will depend upon the appreciation of decision-makers. However, the difference between designed lighting and lighting that has not involved a professional lighting designer is apparent when standing in a finished space.

WHY HIRE A PROFESSIONAL LIGHTING DESIGNER?

By integrating light into your overall design, a professional lighting designer helps achieve the perfect balance between aesthetics and functionality; between efficiency and innovation. Lighting designers understand the role of lighting in architecture and interiors, and utilize their extensive experience and knowledge of lighting equipment and systems to enhance and strengthen design.

At Liska we have highly experienced lighting designers both from the IALD and MSLL community, both of which require its members to meet the highest educational and ethical standards in order to belong to its prestigious communities.

(Text from: 31st Annual IALD International Lighting Design Awards)



The team



Bergþóra Góa Kvaran
Architect FAÍ

*Speciality: Research, site analysis
and policy making*



Guðjón L. Sigurðsson
Lighting designer IALD

*Speciality: Lighting- and
electrical design and project
management*



Kristján Kristjánsson
Lighting designer MSLL

*Speciality: Lighting design,
light art, museums and project
management*



Reynir Örn Jóhannesson
Lighting designer

Speciality: Lighting design



Steinunn Harpa Einarsdóttir
CAD drafter

*Speciality: Drafting, BIM and
lighting calculations*



Þorvarður G. Hjaltason
*Electrical and Business
Industrial Engineer*

*Speciality: Project Management
and electrical design*



Örn Erlendsson
Architectural Engineer, M.Sc.

*Speciality: Daylighting, BIM
management, visualizations and
design*

LISKA

www.liska.is

t: +354 416 0600

e: liska@liska.is

Ármúli 24
108 Reykjavík
Iceland